

# GENERAL MOTION CONTROL

*Your Imagination Our Innovation*



Ac Drive  
Servo Motor & Drive  
HMI  
PLC  
Switch Gears & Control Panel  
Application Development

## GD10 Series Mini VFD Drives

Gd10 Mini Economical Vfd Drives Are Designed For Common Applications Of Small Power Oem Market, With Various Functions Of Pid, Multistage Speed, Dc Braking, Modbus Communication And Others. Its Smaller Size Can Further Reducethe Installation Space (the Size Is About 15% Smaller Than Similar Products).

- Specification:
- 1-ph230v:0.2~2.2kw;
- 3-ph400v:0.2~2.2kw;
- V/F Control Mode
- Max Output Freq 200kHz
- Modbus Communication



## GD20 Series Open Loop Vector Control Drives

Gd20 series drives have excellent drive and control Performance for using of sensorless vector control technology, And improve usability and reliability for the enriched hardware Configurations and software functions, meeting different Industrial applications.

GD20 series 18.5kw~110kw comes standard with built-in Dc reactor, 18.5~37kw built-in standard brake unit, 45~110kw optional built-in brake unit, full range of Independent air duct design, which improves product reliability And performance.

Specification:

- 1-ph230v:0.4~2.2kw;
- 3-ph400v:0.4~7.5kw;
- V/F And SVC Control Mode
- RS-485 Communication



## GD20-E Series Drives

Gooddrive20-E Model is the Economy Version Of Gd20 Drive With Less I/O's And Compact Design For Wall Mounting.

- Specification:
- 1-ph230v:0.4~2.2kw;
- 3-ph400v:0.4~4kw;
- V/F, SVPWM And SVC Control Mode
- RS-485 Communication



## Gd270 Series Drives

Gd270 series VFD is designed for fan and pump driving in waste water treatment, HVAC, chemical, metallurgical, electric power and other industries, with high energy efficiency and flexibility.

Specification:

- 3ph:440V1.5~500kW.
- Special Voltage Vector Control And SVC Control Mode
- 0-400 Hz Output Frequency
- RS-485 Communication
- Overload Capacity 110% rated current for 1 min



## GD200A Series General Purpose Drives

INVT GD200A drives apply V/F vector control and various protections to control asynchronous motors based on DSP control system. The air duct, hardware and software have been greatly improved for better environment adaptability, operation and reliable quality certificated by TÜV SÜD.



## GD350 Series High-performance Drives

GD350 series VFD is a new high-performance inverter. It is highly extensible and flexiblewith PG card, PLC card, communication card and IO card, meeting the demands ofvarious industries. GD350 is oriented for medium and high-end OEM equipmentmarkets, mainly covering the applications of printing and packaging, winding equipment,paper machinery, shearing equipment, textile machinery, HVAC, etc.



## GD350A Series High-performance Multifunctional VFD

GD350A takes advantage of dedicated processor for motor control. It enhances scalability and usability with SVC, VC, STO, LCD keypad, etc. The unity of G/P models can accommodate most operational requirements. Besides, GD350A supports mobile APP operation and has secondary development function. GD350A integrates versatile functions into drive, to meet various load and diversified needs.



## GD300L Series Elevator Drives

GD300L series drives are the new-generation inverters developed based on CHV180 series inverters with GD300 control platform. As using TI 28-series DSP and advanced vector control technology. GD300L elevator drives improved great achievements in security and reliability, control performance, and use functions.



## GD100-PV Series Solar Water Pump VFD

GD100-PV series solar vfd drives are that INVT newly launches specially for solar pumping applications. Based on the original solar pump vfd products, which optimizes the usability and performance, and extends applicable voltage levels and power range of the product. The voltage level can be applied to single phase/three phase 220V, three phase 380V pumps, power range from 0.4kW to 110kW.



## DA200 High Performance Servo Drives

INVT takes users upgrade as the starting point and does its utmost to build the industry star products to meet the industry market and user needs. Leading control performance combined with industry needs only for stimulating the perfect integration of servo systems and application environments.



## IVC1S Series Programmable Logic Controller

IVC1S series products are compact micro PLCs on which functions are highly integrated. They are highly cost-effective in scenarios where a small number of points are applied.

- Supporting a maximum of 60 I/O points; Do not support module extension
- Supporting 2 AB phase inputs, 6 single-phase high-speed pulse inputs, and 2 high-speed pulse outputs Certified by EU Rosh
- Program capacity 6k steps



## IVC1L Series Programmable Logic Controller

IVC1L series products are smart small-sized PLCs, which are designed in a compact structure, provide strong functions, and support flexible I/O configuration. Supporting a maximum of 128-point I/O extension  
Supporting 2 AB phase inputs, 6 single-phase high-speed pulse inputs, and 3 high-speed pulse outputs  
Providing multiple main modules with different I/O configurations, different input power supplies, and integrated analog channels  
Providing three standard independent serial communication ports: Port0 to Port2  
Certified by EU Rosh  
Max number of Extension Module : 7  
• Program capacity 16k steps



## AX Series Motion Controller

AX series programmable controllers are high performance generic controllers for medium and large-scale control systems.

- **High-speed calculation capability**  
Uses the CPU with the basic command processing speed up to 1ns.
- **Large-scale distributed expansion**  
Supports EtherCAT distributed expansion.
- **Advanced motion control**  
Integrated with rich motion control functions; Implements synchronization control and advanced motion control such as electronic cam, electronic gear, and positioning by using high-speed EtherCAT bus or pulses.
- **Electronic cam/gear**
- **Positioning**  
Supports 200k pulses/s, including pulses with direction, forward/reverse pulses and quadrature pulses, to implement position and speed control.
- **Visual configuration**  
Configuration programming  
Highly effective debugging
- **Safe and easy to use**  
Compatible with thermal resistors and thermocouples  
Permanent storage of data  
Security



## VS Series HMI

VS series HMIs provide powerful performance, rich display, easy configuration, and large storage capacity, implementing human and machine interaction in various industrial automation fields through simplified human-machine interfaces.



## VS-Q Series HMI

VS-Q series HMIs provide powerful performance, rich display, easy configuration, and large storage capacity, implementing human and machine interaction in various industrial automation fields through simplified human-machine interfaces.



### Powerful CPU

- Stable, Efficient, Safe, And Reliable Run In Linux
- Industrial Grade High Performance

### Diversified Communication

- Multi- Serial Commuication

### Convenient Configuration

- Multi-set Reciepes, Multi-WindowFunction
- Data Acquisition, Data Alarm Function
- Macros are Supported
- Support For Custom Vector Graphics

### Fetured Function

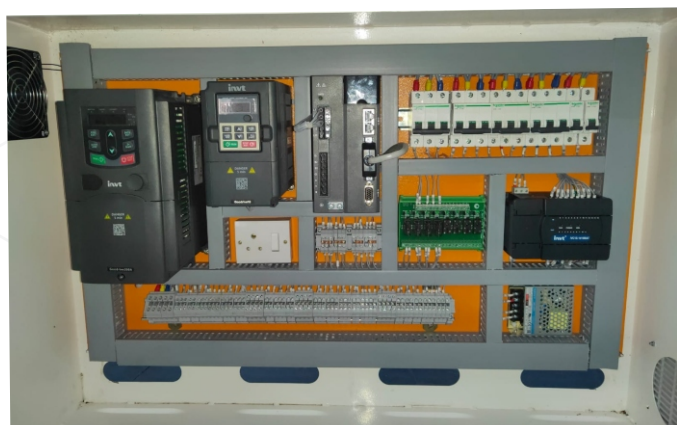
- PC can Communicate Directly with the PLC via the HMI
- USB, Ethernet, U Disk three ways to update the configuration of the Project

### Langauge Font

- Support Up to 50 Languages
- Support TRUE TYPE (TTF) font.

### Safe And Reliable

- Induatrial-Grade Design, Stable Opertion
- High-Capacity FLASH Supports permanent storage of large capacity data without lossof power.





## Solution For Industries

**Packaging | Machine tools | Robotics Arms | Process Automation | Corrugated Paper | Printing | Pharma**

**Reg. Office : A-311, Safal Sumel-8, Nr. Ajit-Mill Cross Road, Rakhial, Ahmedabad-380023**

**E-Mail : [generalmotioncontrol@gmail.com](mailto:generalmotioncontrol@gmail.com) | [sales@generalmotioncontrol.com](mailto:sales@generalmotioncontrol.com) |**

**Contact No. : +91-79840 83917 | +91-81604 31194**